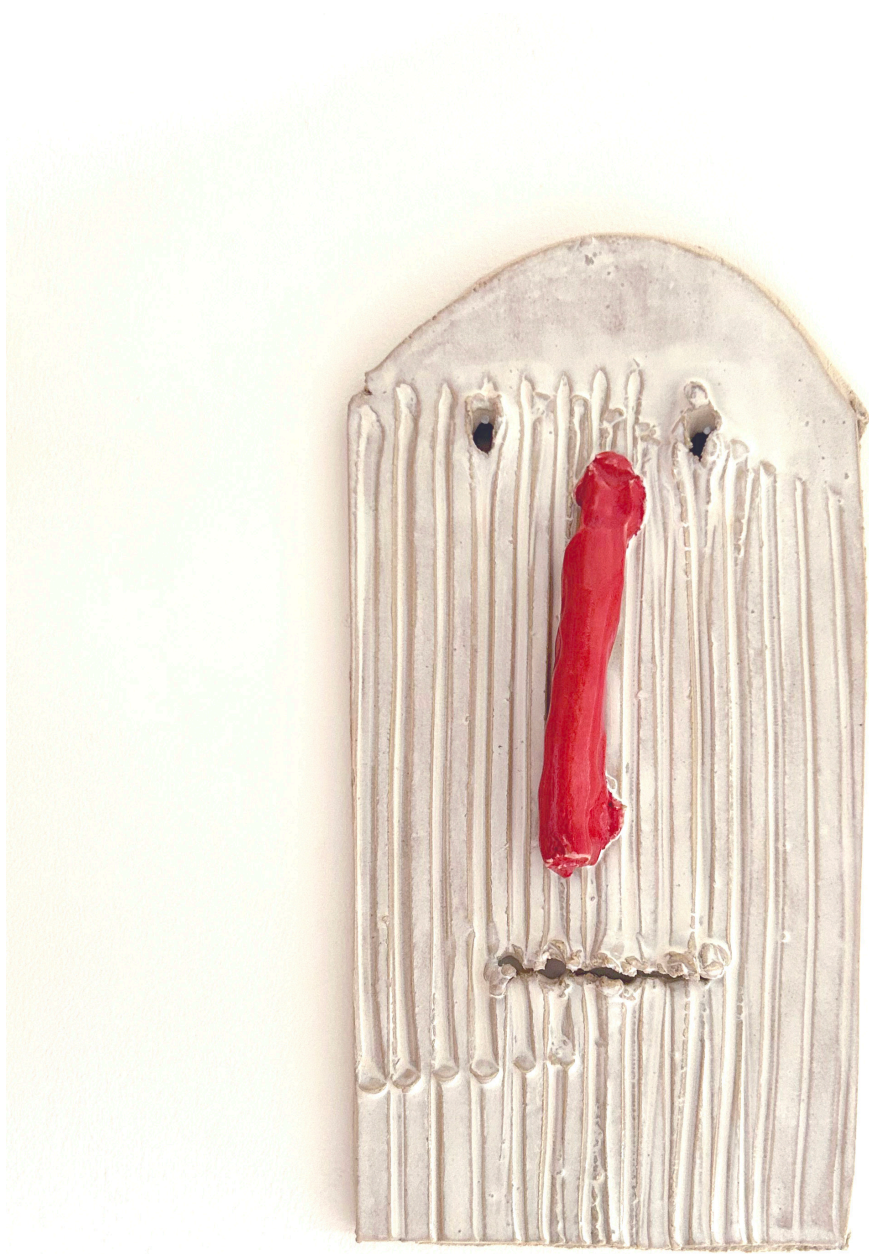




Cohort.



Untitled, 2026.
Glazed stoneware.
32 x 16 x 2.5 cm.
£150.



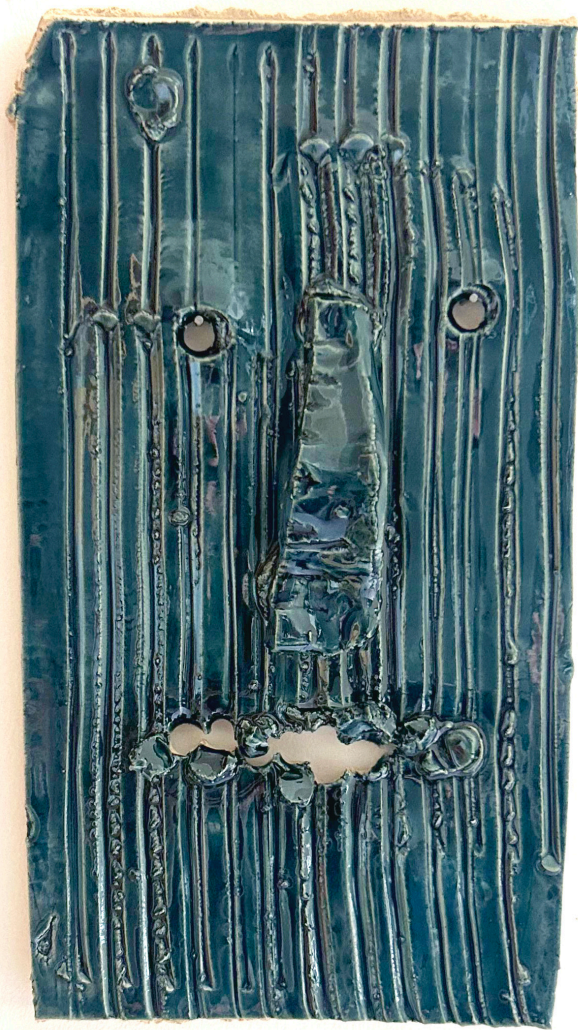
Untitled, 2026.
Glazed stoneware.
31 x 15.5 x 3.5 cm.
£150.



Untitled, 2026.
Glazed stoneware.
33 x 18.5 c 4 cm.
£150.



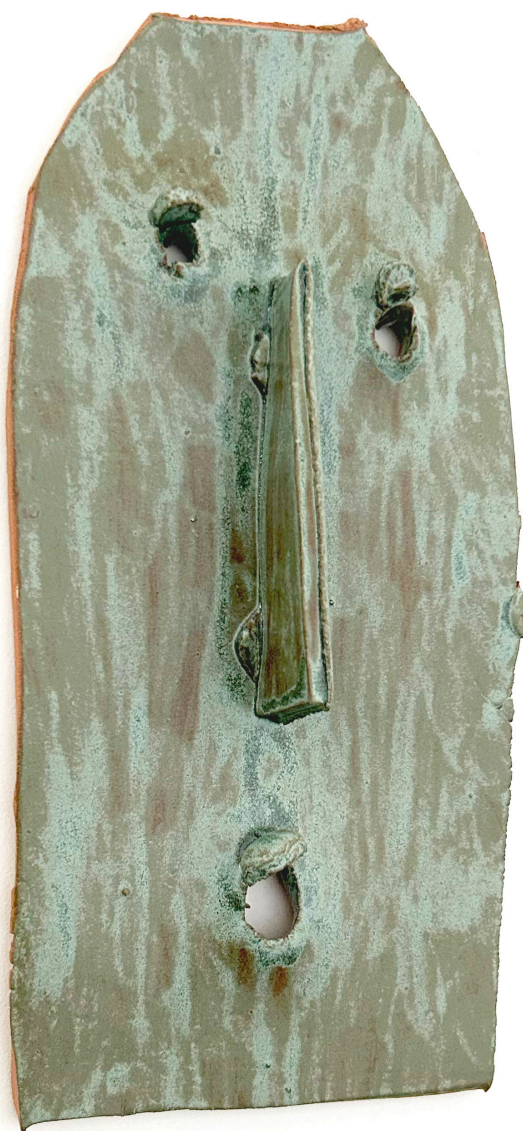
Untitled, 2026.
Glazed stoneware.
30.5 x 17 x 4.5 cm.
£150.



Untitled, 2026.
Glazed stoneware.
30 x 17 x 4.5 cm.
£150.



Untitled, 2026.
Glazed stoneware.
32 x 17.5 x 5 cm.
£150.



Untitled, 2026.
Glazed stoneware.
32 x 15.5 x 5.5 cm.
£150.



Untitled, 2026.
Glazed stoneware.
29.5 x 15.5 x 5 cm.
£150.



Untitled, 2026.
Glazed stoneware.
33.5 x 16 x 5 cm.
£150.



Untitled, 2026.
Glazed stoneware.
30.5 x 15.5 x 3.5 cm.
£120.



Untitled, 2026.
Glazed stoneware.
30 x 19 x 3.5 cm.
£150.



Untitled, 2026.
Glazed stoneware.
30.5 x 15 x 5.5cm.
£120.



Untitled, 2026.
Glazed stoneware.
29 x 17 x 5 cm.
£150.



Untitled, 2026.
Glazed stoneware.
28 x 15 x 4.5 cm.
£120.



Untitled, 2026.
Glazed stoneware.
30.5 x 18 x 2.5 cm.
£150.

Cohort is a group of ceramic 'heads' made over January 2026; silhouettes with simple features made with basic tools. Producing an effect with a narrow economy of means is how I've always seemed to work; often the work becomes simpler the more I attempt to sophisticate it. Producing facial expressions within a rudimentary head is a kind of perfect exercise since, owing to the interdependence of the features, one can be made using an increasingly sparse repertoire of cuts, tears, punctures and joins in the clay.

All works:

Matthew Smith, 2026.

Enquiries: matthewdavidsmith1@gmail.com